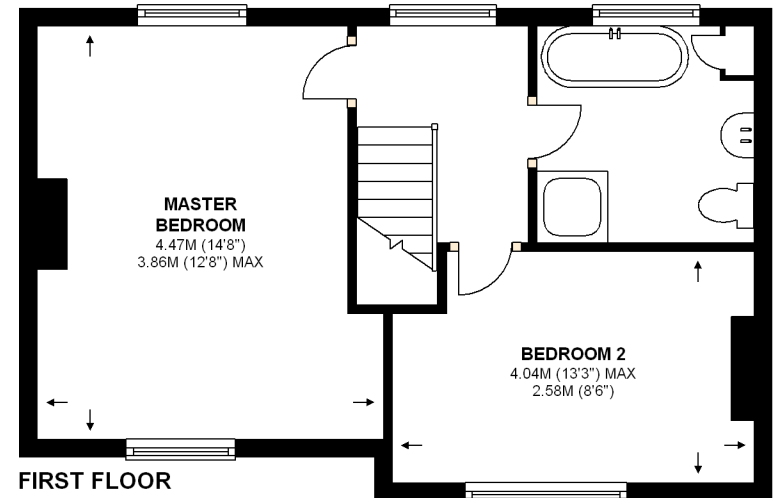
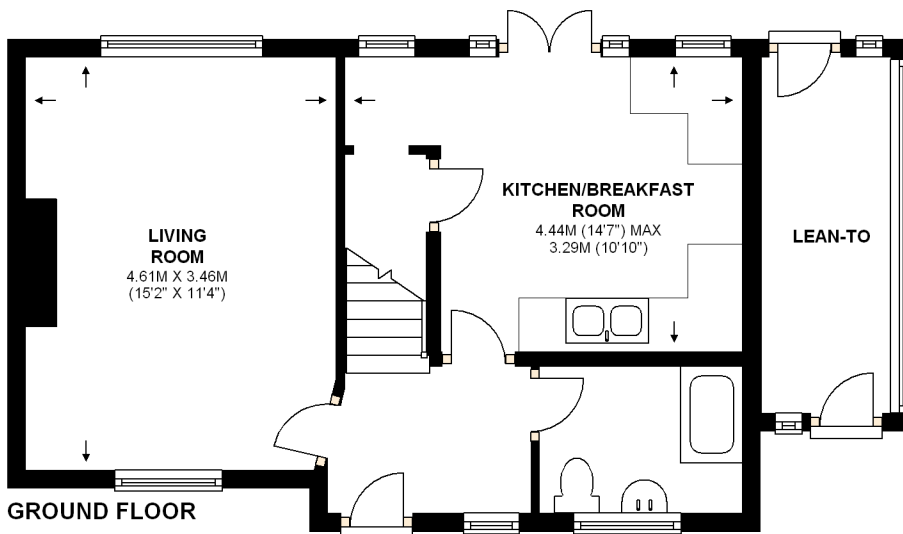
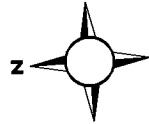


11 Rythe Road, Claygate, KT10 9DG

Ground Floor 39.1 Sq.M (421.0 Sq.Ft)
First Floor 38.2 Sq.M (411.2 Sq.Ft)

**APPROXIMATE GROSS INTERNAL AREA
(EXCLUDING LEAN-TO)
77.3 SQ.M (832.2 SQ.FT)**



This plan is for illustrative purposes only and is not drawn to scale unless stated. Whilst every care has been taken to ensure the accuracy of this plan, dimensions and compass bearings should be checked before making any decisions reliant upon them. Dimensions shown are to the nearest 3" and are to where indicated by arrow heads. Appliances and utilities eg. baths, cookers etc are visuals only, style and shape may differ. Produced by Sketch Design 07854 369275.

THIS PLAN HAS BEEN COMMISSIONED BY MATTHEW PIERCE AND MUST NOT BE REPRODUCED WITHOUT PRIOR PERMISSION.