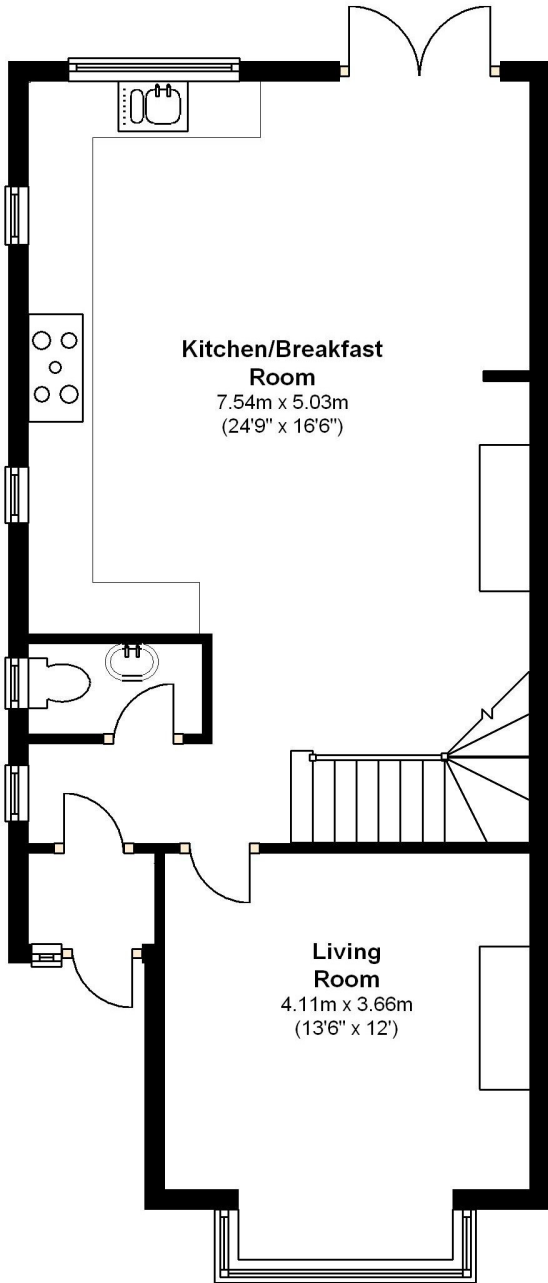


Ground Floor

Approx. 52.4 sq. metres (564.0 sq. feet)



Kitchen/Breakfast Room

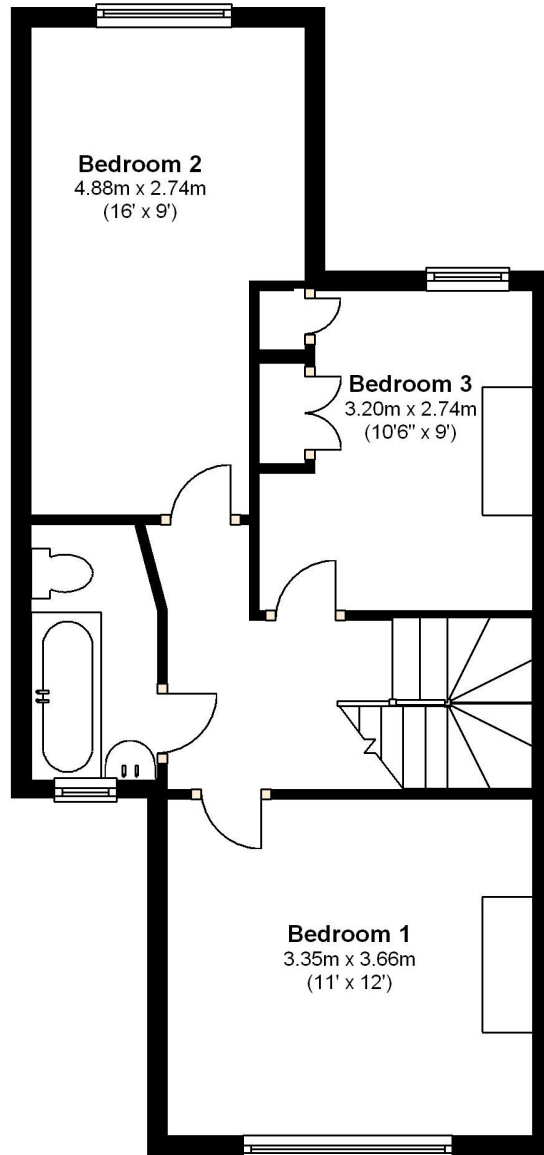
7.54m x 5.03m
(24'9" x 16'6")

Living Room

4.11m x 3.66m
(13'6" x 12')

First Floor

Approx. 43.3 sq. metres (465.9 sq. feet)



Bedroom 2

4.88m x 2.74m
(16' x 9')

Bedroom 3

3.20m x 2.74m
(10'6" x 9')

Bedroom 1

3.35m x 3.66m
(11' x 12')

Total area: approx. 95.7 sq. metres (1029.9 sq. feet)

Whilst every attempt has been made to ensure the accuracy of the floor plans contained here, measurements of doors, windows and rooms are approximate and no responsibility is taken for any error, omission or mis-statement. These plans are for representation purposes only and should be used as such by any prospective purchaser. The services, systems and appliances listed in this specification have not been tested and no guarantee as to their operating ability or their efficiency can be given.